

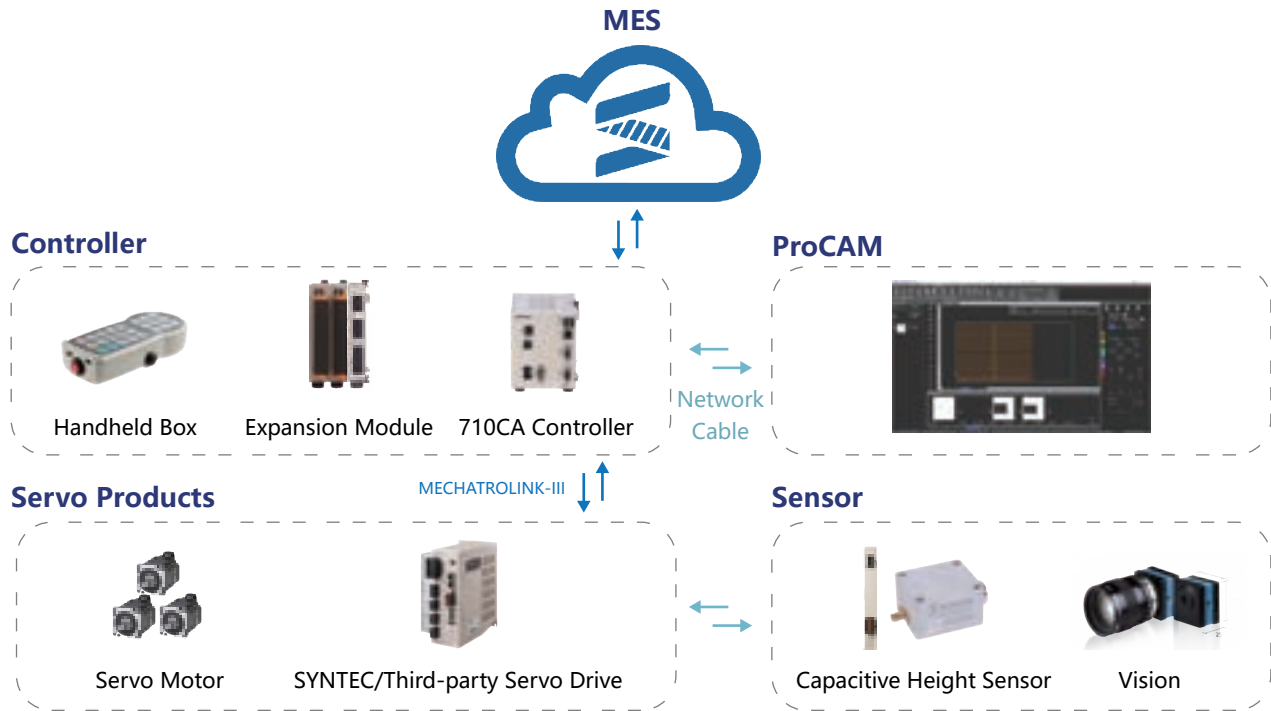


**SYNTEC LASER CUTTING  
CONTROL SYSTEM  
SOLUTIONS**





# Laser Sheet Cutting Product Structure



## Key Features

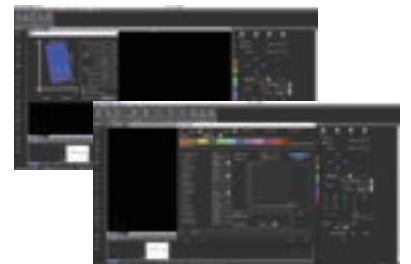
### ProCAM

- Supports drawing, editing, and direct processing
- Supports automatic nesting, scrap management
- Supports lead-in/lead-out, micro-joints, fly cutting, common edge, and other process

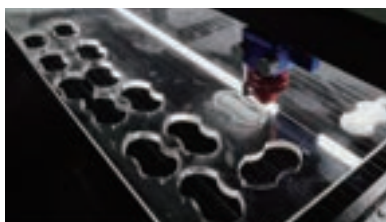


### Built-in cutting industrial

- Can modulate laser source power based on speed, distance, time, and supports most commercially available laser sources
- Supports height following, multi-level piercing, intelligent edge finding, frog jumping, high-speed micro-joints



## Applications



### Non-metal sheet cutting

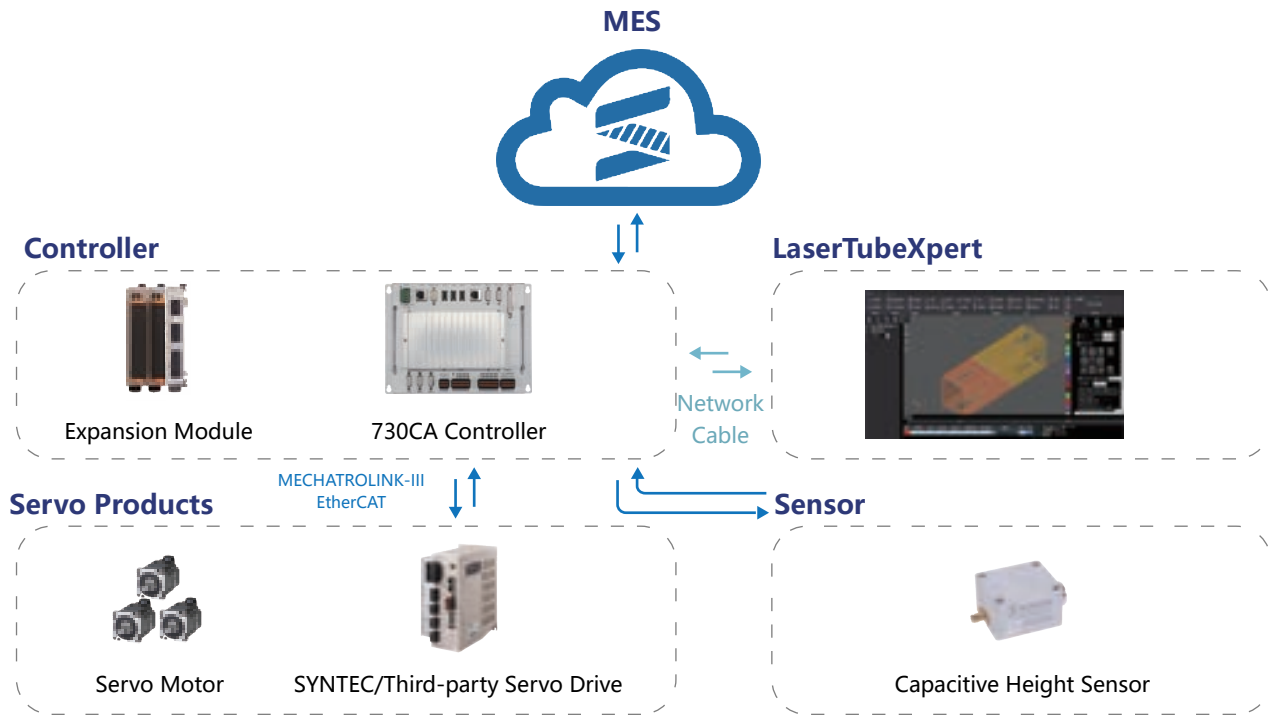
- Widely used in die cutting, advertising, and other non-metal material processing industries
- Supports CO2 laser control and contact height sensor
- Capable of processing wood, acrylic sheets, fabrics



### Metal sheet cutting

- Widely used in metal sheet industry such as electrical cabinets, chassis
- Supports various brands of commercial laser source
- Capable of processing stainless steel, carbon steel, aluminum, copper, and other metal materials

# Laser Tube Cutting Product Structure



## Key Features

### LaserTubeXpert

- Supports round , square , oval , waist-shaped tubes etc.
- Supports drawing, editing, and direct processing
- Supports automatic close arrangement and common edges of multiple pieces

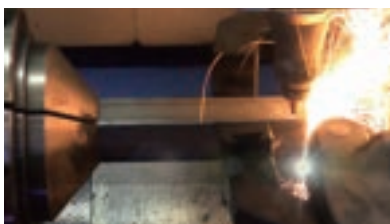


### Built-in laser bevel tube cutting industrial

- Supports R corner, beveling process, and dynamic tool length compensation
- Support position and follow-up control mode switching, square tube corner following
- Support single chuck and double chuck architecture
- Supports mechanism chain correction function and five-axis tool tip point control (RTCP)



## Applications



### Single chuck pulling tube

- Widely used in processing scenarios for mass production of single parts such as round tubes, square tubes, and oval tubes.
- Instead of sawing and drilling, a single machine completes two processes, improving the efficiency of parts manufacturing.

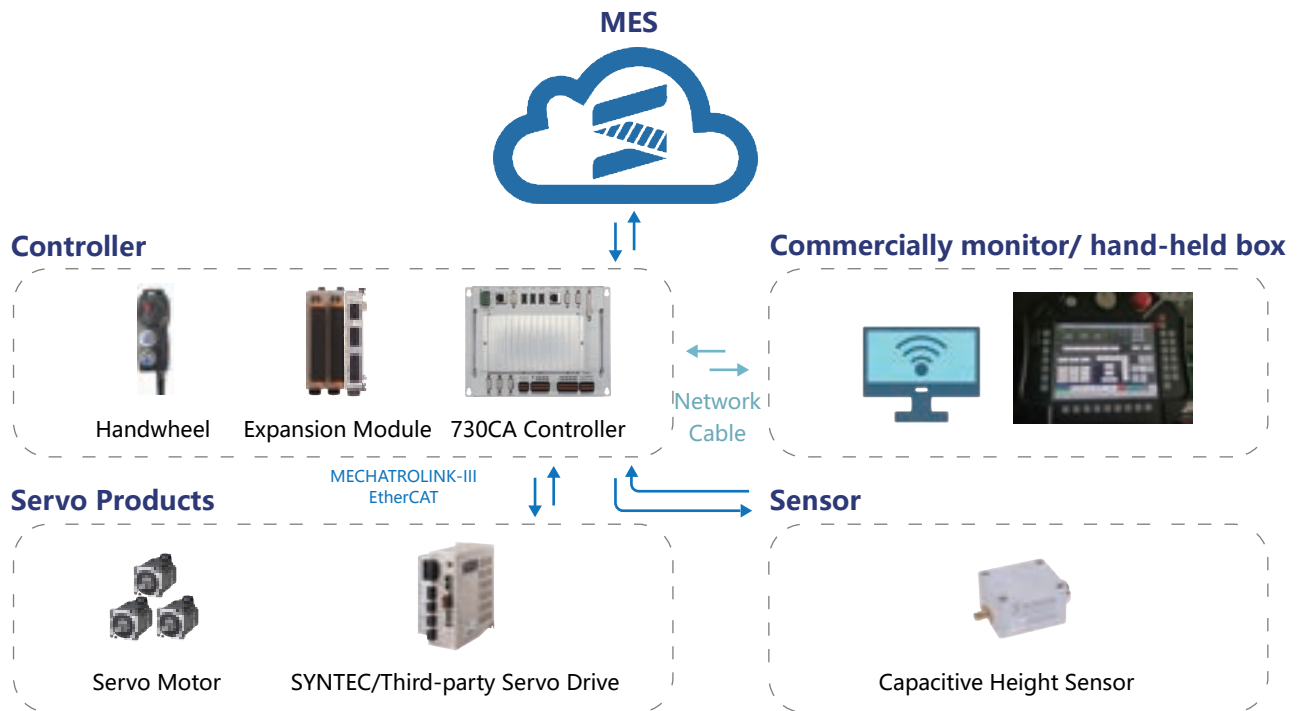


### Bevel tube cutting

- Widely used in tube fittings splicing and processing applications in fitness equipment, furniture industry, etc.
- Supports bevel processing of various tube shapes such as round, square, elliptical, beaded , etc., to improve the strength of the finished product in the next welding process.



# Laser Five-axis Cutting Product Structure



## Key Features

### Package height adjustment solution

- Provides SYNTEC package height adjustment solution
- Supports piercing function, real-time follow-up height control



### Convenient teaching function

- Dialog-based program design operation, low programming threshold, quick start
- Supports flat DXF import drawing/online drawing function
- Supports offline programming processing



## Applications



### Non-metal five-axis

- Widely used in processing applications such as automotive interior parts, bumpers, dental membranes, VR glasses, helmets, etc.
- Replaces stamping forming processes, adapts to flexible automated production lines, reduces part manufacturing costs



### Metal five-axis cutting

- Widely used in automotive sheet metal parts, AB columns, household appliances, sports equipment, and other parts processing
- Capable of processing high-strength thermoformed materials, reducing mold costs, meeting the needs of small-batch diversified processing

# Specification

## 710CA Controller

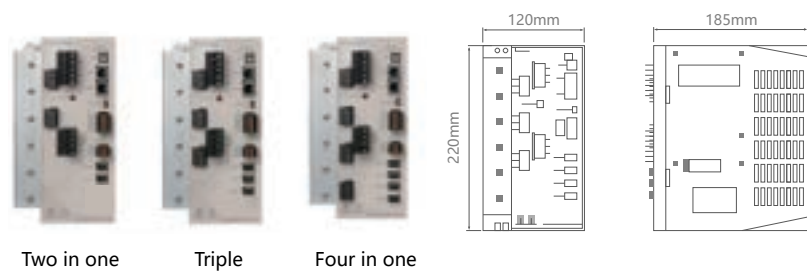


## 730CA Controller



System	710CA	730CA
Monitor	VGA	
USB	2	3
Network	10/100 Mbps	
Communication Protocol	RS485, Modbus, TCP, EtherNet/IP	
Servo Interface	Mechatrolink-III/EtherCAT	
Control Axes	Standard 5 axes (max. 16 axes)	
External Interface	RJ-45, USB, DSUB, MPG	
I/O bit	Up to 4096 points	
Input Voltage	DC24V 1A	

## Series Servo Driver



Two in one

Triple

Four in one

System	SMD-22B	SMD-23B	SMD-24B
Control Axes	2	3	4
Support Encoder Model	Nikon-Tamagawa-Sankyo-Panasonic-Hiwin		
I/O bit	21 / 20		
Servo Interface	Mechatrolink-III/EtherCAT		
Input Voltage	220V		

## TAIWAN

### Taiwan (Hsinchu)

SYNTEC Technology Co., Ltd  
ADD : No.25, Yanfa 2nd Rd., East Dist.,  
Hsinchu City 300, Taiwan (R.O.C.)  
TEL : +886-3-6663553  
FAX : +886-3-6663505  
EMAIL : sales@syntecclub.com.tw

### Taichung

SUN-CNC Co., Ltd  
ADD : No. 22, Lane 428, Section 1, Fengyuan  
Boulevard, Fengyuan District  
TEL : +886-4-25337731  
TAX : +886-4-25349224

### TANLU-CNC Co., Ltd

ADD : No. 42, Jingming Road, Xitun District,  
Taichung City, Taiwan (R.O.C.)  
TEL : +886-4-23102628  
TAX : +886-4-23102636

### Tainan

ADD : No. 218, Denan Road, Rende District,  
Tainan City, Taiwan (R.O.C.)  
TEL : +886-6-2798707  
TAX : +886-6-2798705

## CHINA

### Jiangsu

SYNTEC TECHNOLOGY(Suzhou)CO.,Ltd  
ADD : Building B, No.9 Chunhui Road,Suzou Industrial  
Park, China  
TEL : 0512-69008860  
FAX : 0512-69246029

### SYNTEC TECHNOLOGY(Suzhou)CO.,Ltd WuXi Office

ADD : B906, Yuye Network Building, 68 Exploration  
Road, Hulishan District, Wuxi City, Jiangsu Province,  
China  
TEL : 15295664580

### SYNTEC TECHNOLOGY(Suzhou)CO.,Ltd Changzhou Office

ADD : Room 2217, Yatai Fortune Center, No. 1  
Huayuan Street, Hutang Town, Wujin District,  
Changzhou City, Jiangsu Province, China  
TEL : 18168828572

### SYNTEC TECHNOLOGY(Suzhou)CO.,Ltd XuZhou Branch

ADD : Room 1503, South of Territorial Sea Office  
Building, No. 66, Kumpeng Road, Xuzhou Economic  
Development Zone, Jiangsu Province, China  
TEL : 13656201020

### SYNTEC TECHNOLOGY(Suzhou)CO.,Ltd NanJingBranch

ADD : Room 712, Research Building 1, Lianggang  
Park, 117 Suyuan Avenue, Jiangning District, Nanjing  
City, Jiangsu Province, China  
TEL : 025-52717702  
FAX : 025-52717710

### SYNTEC TECHNOLOGY(Suzhou)CO.,Ltd NanTong Branch

ADD : Room T3-1301, No. 108, Gangzha District,  
North Street, Nantong City, Jiangsu Province, China  
TEL : 0513-89077025  
FAX : 0513-89072057

### SYNTEC TECHNOLOGY(Suzhou)CO.,Ltd NanTong Branch Yanchen Office

ADD : Room 401, building 13, phase 9, Zhongnan  
Century City, Yandu District, Yancheng City, Jiangsu  
Province  
TEL : 18625235150

### Shaanxi

### SYNTEC TECHNOLOGY(Suzhou)CO.,Ltd XiAn Branch

ADD : Room 1, 1328, Building 4, Yicui Garden I  
Dihua, No. 10, South Tangyan Road, Xi'an  
High-tech Zone  
TEL : 029-88287423

### SYNTEC TECHNOLOGY(Suzhou)CO.,Ltd BaoJI Office

ADD : Room 1702, Unit 3, Building 8, Dongling Xinshiji,  
Binhe North Road, Jintai District, Baoji, Shaanxi  
Province, China

## AROUND THE WORLD

### Malaysia

MYSYNTEC TECHNOLOGY SDN BHD  
ADD : 16, Jalan Astana 1F, Bandar Bukit Raja, 41050  
Klang, Selangor, Malaysia.  
TEL : +603-33115887  
EMAIL : sales.malaysia@syntecclub.com

### Thailand

MYSYNTEC TECHNOLOGY SDN BHD  
ADD : 78/38 Kheha Romkiao Rd., Khlong Song Ton Nun,  
Lat Krabang Bangkok, 10520  
TEL : +662-006-5738

### Vietnam

SYNTEC VIET NAM TECHNOLOGY CO., LTD  
ADD : 3F, No. 36, A4 Street, Ward 12, Tan Binh District,  
Ho Chi Minh City, VietNam  
TEL : +84-938332829  
FAX : +84-2822535556  
EMAIL : andyngo@vnsyntec.com.vn

### India

SYNTEC TECHNOLOGY INDIA PVT.LTD  
ADD : Champaka building, P-6C,2nd floor, peenya industrial  
area Near peenya police station Bangalore-560058  
TEL : +91-9916146577  
E-mail : raghavendra.naik@syntecclub.com

### Turkey

SYNTEC TEKNOLOJİ LTD (Istanbul)  
ADD : Küçükbakkalkoy Mah. Vedat Günyol Cd. Defne Sok.  
No:1 D:1502 Flora Residence.34750 Atasehir/Istanbul, Türkiye  
TEL : +90-216-2662475

### USA

USA SYNTEC ECHNOLOGY, INC (South California)  
ADD : 2841 Saturn St, #D, Brea, CA 92821  
TEL : +1800-851-0187  
EMAIL : info@syntecamerica.com

### Korea

AISYNTECH (Service Partner)  
ADD : 312Ho 103Dong 88, Sinwon-ro, Yeongdong-gu, Suwon-si,  
Gyeonggi-do, 16681, Rep. of KOREA  
TEL : +82 70-8615-1134  
EMAIL : thetechtv100@gmail.com

### Guangdong

SYNTEC TECHNOLOGY(Suzhou)CO.,Ltd GuangDong  
Branch  
ADD : Factory 201or 301, Building A, No.10 Nanjiang  
Third Road, Zhujiang Street, Nansha District, Guangzhou  
City,  
TEL : 020-39089367  
FAX : 020-39089791

### SYNTEC TECHNOLOGY(Suzhou)CO.,Ltd DongGuan Branch

ADD : 0769-81661ing 1, Mobile Group, No. 522, Zhen  
'an East Road, Chang 'an Town, Dongguan City,  
Guangdong Province, China  
TEL : 0769-81660318

### SYNTEC TECHNOLOGY(Suzhou)CO.,Ltd GuangZhou Branch

ADD : Room 404, Building 2, Seven Friendship Building  
No. 8 Luojiaou Section, Fuyi Road, Dalong Street,  
Panyu District, Guangzhou City, Guangdong Province  
TEL : 020-34583040  
FAX : 020-34583220

### SYNTEC TECHNOLOGY(Suzhou)CO.,Ltd ChangPing Branch

ADD : Floor 5, Huilong Building, No. 8, Zhanqian 1st  
Road, Banshi Village, Changping Town, Dongguan City,  
Guangdong Province, China  
TEL : 0769-82826802  
FAX : 0769-82826820

### SYNTEC TECHNOLOGY(Suzhou)CO.,Ltd ShenZhen Branch

ADD : 406, Block E, Haowei new material industrial  
park, No. 8, Qinglan 1st Road, Zhukeng community,  
Longtian street, Pingshan District, Shenzhen,  
Guangdong  
TEL : 0755-84320380  
FAX : 0755-84559490

### SYNTEC TECHNOLOGY(Suzhou)CO.,Ltd JiangMen Branch

ADD : Room 02, 7th Floor, Torch Building, Hi-Tech  
Zone, 288 Jinou Road, Jianghai District, Jiangmen City,  
Guangdong Province, China  
TEL : 0750-3762143

### Henan

### SYNTEC TECHNOLOGY(Suzhou)CO.,Ltd LuoYang Branch

ADD : Room 704, Runsheng Building, Intersection of  
Heluo Road and Sanshan Road, Hi-Tech Zone, Luoyang,  
Henan Province, China  
TEL : 0379-65110352  
FAX : 0379-65110352

### SYNTEC TECHNOLOGY(Suzhou)CO.,Ltd ShiJiaZhuang Office

ADD : 4-3-801, Rey Community, No. 8 Huaxing Road,  
Qiaoxi District, Shijiazhuang City, Hebei Province, China  
TEL : 18622728669  
FAX : 0379-65110352

### Fujian

SYNTEC TECHNOLOGY(Suzhou)CO.,Ltd XiaMen  
Branch  
ADD : Floor 3, No. 2, Jixiang West Road, Xinmin Town,  
Tongan District, Xiamen City, Fujian Province  
TEL : 0592-7191904  
FAX : 0592-7220536

### Zhejiang

### SYNTEC TECHNOLOGY(Suzhou)CO.,Ltd HangZhou Branch

ADD : 1202, Unit 2, Building 1, Dikai Building, No.471  
Jincheng Road, Xiaoshan District, Hangzhou City,  
Zhejiang Province, China  
TEL : 0571-82751187

### SYNTEC TECHNOLOGY(Suzhou)CO.,Ltd HangZhou Branch Jinhua Office

ADD : Room G204, No. 1729, Dongshi North Street,  
Xinshi street, Wucheng District, Jinhua City, Zhejiang  
Province  
TEL : 1599-0026533

### SYNTEC TECHNOLOGY(Suzhou)CO.,Ltd WenZhou Branch

ADD : 1205-3, Honghai building, Ouhai District,  
Wenzhou City, Zhejiang Province  
TEL : 0577-86158619

### SYNTEC TECHNOLOGY(Suzhou)CO.,Ltd NingBo Branch

ADD : Room 1207, Ivy League Building, No.262, Lane  
416, Zhaohui Road, Jiandang District, Ningbo City,  
Zhejiang Province, China  
TEL : 0574-87750305

### SYNTEC TECHNOLOGY(Suzhou)CO.,Ltd WenLing Branch

ADD : Room 509, Haocheng Service Building, No. 838,  
Wanchang Middle Road, Chengdong Street, Wenling  
City, Taizhou City, Zhejiang Province, China  
TEL : 0576-86119106

### SYNTEC TECHNOLOGY(Suzhou)CO.,Ltd YuHuan Office

ADD : Room 302, Unit 2, Building 1, Hualong Times  
Square, 226 Provincial Road, Chunmen Town, Yuhuan  
County, Taizhou City, Zhejiang Province, China  
TEL : 13088636567

### Chongqing

### SYNTEC TECHNOLOGY(Suzhou)CO.,Ltd ChongQing Branch

ADD : 1007, Building 4, No.62, East Section of Taishan  
Avenue, Yubei District, Chongqing  
TEL : 023-67913296  
FAX : 023-67634382

### SYNTEC TECHNOLOGY(Suzhou)CO.,Ltd ChengDu Office

ADD : ADD : Room102, Unit 1, Building 24, Jiazhaoey  
Modern City, No.898, Section 2, Xingxing Road,  
Dongsheng Street, Shuangliu District, Chengdu City,  
Sichuan Province, China  
TEL : 18302866229



SYNTEC Technology Co., Ltd.  
No.25, Yanfa 2nd Rd., East Dist.,  
Hsinchu City 300, Taiwan (R.O.C.)

☎ 886-3-6663553  
☎ 886-3-6663505  
✉ sales@syntecclub.com.tw

Suzhou SYNTEC Equipment Co.,Ltd.  
No. 9th, Chun Hui Road, Suzhou  
Industrial Park, Jiangsu Province

☎ 86-512-69008860  
☎ 86-512-65246029  
✉ service@syntecclub.com.cn



<http://www.syntecclub.com.tw>

Copyright © SYNTEC Technologies Corp.  
©2024.03\_rev.1 (PRINTED IN TAIWAN)

\*SYNTEC reserves the right to revise catalog information at any time without notice due to typographical errors or any errors.